



Product Gallery 2024

Thank you for choosing OW Lee.

For over 75 years, OW Lee has been dedicated to the design and production of fine, handcrafted outdoor furniture. From our manufacturing facility in Comfort, Texas, artisans combine centuries-old techniques with state-of-the-art equipment to produce beautiful outdoor furniture.

Through four generations, OW Lee has maintained its commitment to quality and we will continue to produce the finest handcrafted outdoor furniture available.





# TABLE OF CONTENTS

## ABOUT OW LEE

|   |            |
|---|------------|
| 2 | COMPANY    |
| 3 | QUALITY    |
| 5 | INNOVATION |

## COLLECTIONS

|    |            |
|----|------------|
| 6  | ARIS       |
| 10 | AVANA      |
| 12 | CLASSICO   |
| 16 | KENSINGTON |
| 20 | MARIN      |
| 24 | MONTERRA   |
| 28 | STUDIO     |

## CASUAL FIRESIDE®

|    |             |
|----|-------------|
| 32 | PROGRAM     |
| 34 | OPTIONS     |
| 36 | SANTORINI   |
| 36 | CAPRI       |
| 37 | ELBA        |
| 37 | FORMA       |
| 38 | ACCESSORIES |

## TABLES, TOPS & BASES

|    |             |    |              |
|----|-------------|----|--------------|
| 39 | PROGRAM     | 44 | VALENCIA     |
| 40 | FRESCO      |    | PORCELAIN    |
|    | PORCELAIN   | 45 | TABLE BASES  |
| 41 | CITY SERIES | 47 | FULLY-WELDED |
|    | PORCELAIN   |    | TABLES       |
| 42 | RECLAIMED   |    |              |
|    | PORCELAIN   |    |              |
| 43 | DAKOTA      |    |              |
|    | PORCELAIN   |    |              |

## FABRICS & FINISHES

|    |               |    |        |
|----|---------------|----|--------|
| 48 | THROW PILLOWS | 51 | TRIM   |
| 48 | WORLD OF      | 51 | SLING  |
|    | COLOR         | 51 | FINISH |
| 50 | DESTINATIONS  |    |        |
| 51 | PENDLETON     |    |        |

## PRODUCT INFORMATION

|    |                    |
|----|--------------------|
| 52 | CARE & MAINTENANCE |
| 53 | RETAIL WARRANTY    |





## MADE FOR GENERATIONS

Truly an American family tradition, OW Lee Company was established in 1947 in Pasadena, California by Oddist W. Lee, as a fabricator of wrought iron gates and railings for the luxurious estates of Southern California. Due to increased requests, Oddist began to design and sell wrought iron kitchenettes and bistro sets for local furniture stores, which eventually lead to selling national furniture chain furniture stores throughout the U.S.

Oddist's son, Bob, joined the company in the 1950s and in the 70s and 80s began to design and sell high end patio furniture to patio furniture specialty stores throughout the United States, establishing OW Lee Company as a well-known and reputable U.S. manufacturer in the ever-growing outdoor furniture industry.

Now, 75 years later, the third and fourth generations of the Lee family maintains O.W.'s commitment to manufacturing quality furniture and fire pits in the United States. In 2021, OW Lee moved its manufacturing facility to Comfort, Texas which is located in the beautiful Hill Country of Southcentral Texas, northwest of San Antonio.

The OW Lee name stands for quality, innovation and design, and as a family owned and operated business, pledge to continue the tradition started in 1947.



2010 | 2012 | 2013 | 2014 | 2015 | 2016 | 2017 | 2020

Voted by Casual Furniture Industry Retailers  
**ICFA Manufacturer of the Year**

**The International Casual Furnishings Association is a global leader in promoting business development and partnerships in the outdoor and casual furnishings industry. The Manufacturer of the Year award is one of the ICFA's top honors. ICFA members are invited to vote for this award using the following criteria: design and quality of products, merchandising, customer service, ethics, communications, and trade relations.**

## OW Lee stands for quality.

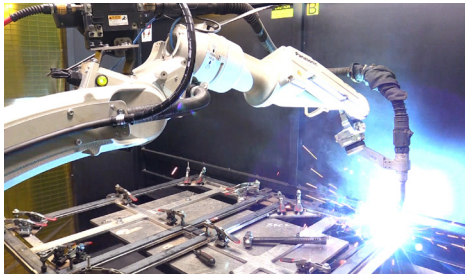
We do everything possible to make furniture that stands up to:

- ✓ Structural Failure
- ✓ Corrosion
- ✓ Rusting
- ✓ Oxidation
- ✓ Mold and Mildew
- ✓ Rain Water Retention
- ✓ Fading
- ✓ Disintegration from UV Rays
- ✓ Chemicals
- ✓ Stains

We invite you to learn about the steps we take to ensure your OW Lee furniture lasts for generations.



## Frames & Finish



OW Lee utilizes two robotic welders for simpler and high volume items. These robotic welders allow OW Lee to achieve the highest level of accuracy in mere seconds.

Starting with raw materials, OW Lee adheres to the highest quality standards. Our raw aluminum and iron rods, tubing, and sheets used to make chair, table, and fire pit frames is often the most durable available on the market.



OW Lee employs an extensive process to apply a long-lasting powder coating finish to our frames. Using a chemical reaction, tiny paint-like particles known as "powder" adhere to the frame.

The chemical reaction in powder coating causes the particles to spread evenly into every corner and crevasse of the frame, preventing exposed metal which can cause corrosion. Our state of the art 7-step powder coating process includes two washing cycles, a zinc-rich primer coat, a baking process and then the final finish color is applied. This process puts a 4-6 mil thick finish on the metal, providing excellent protection against the outdoor elements.



Wherever there is an intersection of metal, we use a full-circumference weld to join the metal together.

While shopping, you may notice that OW Lee chairs are much heavier than other outdoor chairs. This is evidence of the thicker material we use. The thicker material is much more durable for outdoor use.



Steel and aluminum pieces are bent into exact shapes and then hand forged with a hammer and anvil, a process unchanged since blacksmiths in the middle ages.

# Cushions

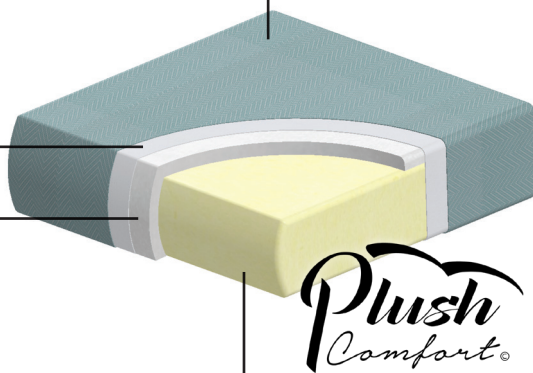
Tenara® thread is made from specially engineered fluoropolymer, not polyester like typical thread. Tenara thread is UV and water resistant, and will not break down from harsh chemicals such as bleach or chlorine.



OW Lee uses polyester Velcro to attach the cushion to the metal frame which has better UV resistance than traditional nylon Velcro.

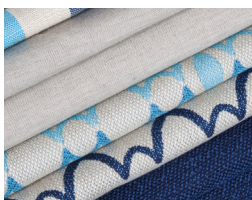
Cushion style used for deep seating cushions. (lounge chair, sofa, sectional, etc.)

Spun water resistant barrier fabric repels moisture and has a high breathability factor that allows for longer lasting comfort and immediate recovery.



The polyester fiber dacron wrap provides soft yet durable comfort.

The indoor residential foam core provides the same type of comfort as fine indoor upholstered furniture and maintains original shape.



All Stock fabrics are solution dyed acrylic. In "solution dyed" fabric every fiber in the yarn receives dye. Solution dyed fabric is more fade resistant than traditionally dyed fabric. The fabric is mold and mildew resistant and holds up to chemicals well (think about pool chlorine and bleach cleaning). It also has water wicking and quick drying properties.

OW Lee stands behind the quality and construction of their cushions. We offer a five year warranty; one of the best warranties in the industry.



Only the highest quality outdoor fabrics are used in creating custom tailored cushions that follow the lines of the collection and fit each piece of furniture perfectly.



Each cushion is expertly sewn by hand in Comfort, Texas.



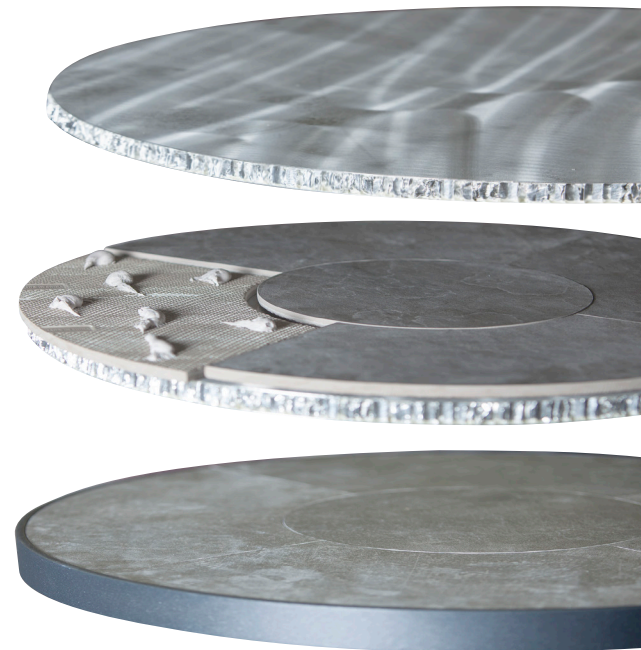
Sling is popular for outdoor spaces not only because it's comfortable. It is also water resistant, easy to maintain, and does not tear or crack easily.

- ✓ Available on select OW Lee collections in chaise lounges, sling and padded sling dining.
- ✓ Utilizes sewn pocket system for easy replacement.
- ✓ Sling dries quicker than foam related products.
- ✓ Sunbrella Sling's proprietary technology blends the strength of PVC with the softness of Sunbrella acrylic yarn for added comfort.
- ✓ Available in fifteen colors. Padded sling also available in all fabric options.

## Porcelain Tops

Our porcelain table tops contain three layers: the substrate, the adhesive, and the porcelain tile with grout, wrapped by a metal rim.

- 1** The substrate is the "foundation" of the table top. It is made of two lightweight aluminum sheets with a honeycomb structure sandwiched in between. The honeycomb shape is the strongest shape in nature and provides lightweight strength for the table top. This same material is also used on the sides of skyscrapers for the same reasons.
- 2** The next layer is an epoxy glue that adheres the tiles onto the substrate. This adhesive is superior to using tile mastic or other types of bonds, because of a chemical reaction that takes place, creating a stronger bond as it dries. The epoxy adhesive is also waterproof.
- 3** Lastly, the tile is precisely set and an epoxy grout is used where tiles meet. Porcelain tiles are used over ceramic tiles or natural stone because they are denser and less porous which means they do not absorb water. In freezing temperatures these other materials are likely to split or crack when the water absorbed into the material freezes and expands. Our porcelain tiles not only repel water, but all other liquids as well, so it will not stain from spills. These porcelain tiles are **commercial grade** and very durable. The kiln-fired finish is as durable as the tile itself and will last for years. The metal rim protects the tile from breaking due to side impact. For example, when the back of a chair hits against the table.





*Plush  
Comfort.*





---

# ARIS

## ALUMINUM

The Aris collection applies mid-Century ergonomics to modern lines creating an attractive and superbly comfortable design. To achieve this comfort level, we have developed a two chambered ergonomically correct pillow back cushion. With the Aris collection, we intend to prove contemporary and comfort can be synonymous. Aris is a full-line collection that features dining chairs, counter and bar stools, urban scale, traditional, max deep seating, and chaise lounge options. Additionally, Aris' deep seating features our Plush Comfort cushion and Sytex seating system.







**2731-S**  
**Dining Side Chair**  
 #31-B Back Cushion Optional  
 18"W x 24.25"D x 34.25"H  
 Seat Height 18.75"



**2733-A**  
**Dining Arm Chair**  
 #173-B Back Cushion Optional  
 24"W x 26.25"D x 38"H  
 Seat Height 19.75" Arm Height 25.5"



**2733-SR**  
**Swivel Rocker Dining Arm Chair**  
 #173-B Back Cushion Optional  
 24"W x 26.25"D x 37.75"H  
 Seat Height 19.25" Arm Height 25.25"



**2731-MCS**  
**Backless Counter Stool**  
 18"W x 18"D x 27.25"H



**2731-CS**  
**Armless Counter Stool**  
 #31-B Back Cushion Optional  
 18"W x 24.25"D x 43.25"H  
 Seat Height 27.75"



**2731-MBS**  
**Backless Bar Stool**  
 18"W x 18"D x 31.25"H



**2731-BS**  
**Armless Bar Stool**  
 #31-B Back Cushion Optional  
 18"W x 24.25"D x 47.25"H  
 Seat Height 31.75"



**27177-SR**  
**Urban-Scale Swivel Rocker Lounge Chair**  
 26.25"W x 31.5"D x 37.75"H  
 Seat Height 17.25" Arm Height 24.25"



**27160-O**  
**Urban-Scale Ottoman**  
 26.25"W x 34"D x 18.5"H



**27175-CC**  
**Lounge Chair**  
 30"W x 36"D x 42.75"H  
 Seat Height 18" Arm Height 25.5"



**27175-SR**  
**Swivel Rocker Lounge Chair**  
 30"W x 36"D x 42.75"H  
 Seat Height 17.5" Arm Height 25.25"



**27175-2S**  
**Love Seat**  
 56"W x 36"D x 42.75"H  
 Seat Height 18" Arm Height 25.5"



**27175-3S**  
**Sofa**  
 82"W x 36"D x 42.75"H  
 Seat Height 18" Arm Height 25.5"



**27170-O**  
**Ottoman**  
 30"W x 22"D x 18"H



**27179-CH**  
**Adjustable Chaise**  
 30"W x 66.25"D x 39"H  
 Seat Height 16" Arm Height 19.75"



**27275-SR** New!  
**Max Swivel Rocker Lounge Chair**  
 45.25"W x 36"D x 42.25"H  
 Seat Height 17.5" Arm Height 27.75"



**27276-2S** New!  
**Max Love Seat**  
 67.25"W x 36"D x 42.5"H  
 Seat Height 17.75" Arm Height 28"



**27277-3S** New!  
**Max Sofa**  
 93.25"W x 36"D x 42.5"H  
 Seat Height 17.75" Arm Height 28"

For dining, bar and occasional tables refer to the Modern Bases & Tables in the Tables, Tops and Bases section.

---

# AVANA

## ALUMINUM

The Avana collection was designed with simplicity and comfort in mind. Its transitional profile features a modern swooping arm that is echoed in the gracefully balanced design of the back. Sunbrella Sling is incorporated on the dining and chaise seating, adding an extra level of ease and durability. Avana is a full-line collection that includes sling and padded sling dining, cushioned deep seating and sling chaise lounge options. Avana's cushioned deep seating features our Plush Comfort cushions and Sytex seating system.





**65192-A**  
**Sling Dining Arm Chair**  
 24.25"W x 28.75"D x 37.5"H  
 Seat Height 18.25" Arm Height 26.75"



**65192-SR**  
**Sling Swivel Rocker Dining Arm Chair**  
 24.25"W x 28"D x 37.5"H  
 Seat Height 18.25" Arm Height 26.75"



**65192P-A**  
**Padded Sling Dining Arm Chair**  
 24.25"W x 28.75"D x 37.5"H  
 Seat Height 18.25" Arm Height 26.75"



**65192P-SR**  
**Padded Sling Swivel Rocker Dining Arm Chair**  
 24.25"W x 28"D x 37.5"H  
 Seat Height 18.25" Arm Height 26.75"



**65156-CC**  
**Lounge Chair**  
 30"W x 36.25"D x 40"H  
 Seat Height 18" Arm Height 25.25"



**65156-SR**  
**Swivel Rocker Lounge Chair**  
 30"W x 37"D x 39.75"H  
 Seat Height 18" Arm Height 25"



**65156-2S**  
**Love Seat**  
 56"W x 36.25"D x 40"H  
 Seat Height 18" Arm Height 25.25"



**65156-3S**  
**Sofa**  
 82"W x 36.25"D x 40"H  
 Seat Height 18" Arm Height 25.25"



**6590-O**  
**Ottoman**  
 30"W x 23.75"D x 18.25"H



**65198-CHW**  
**Sling Adjustable Chaise with Wheels**  
 30"W x 78"D x 39.25"H  
 Seat Height 15.25" Arm Height 22"

For dining and occasional tables refer to the Modern Bases & Tables in the Tables, Tops and Bases section.



*Plush  
Comfort.*



---

# CLASSICO

## WROUGHT IRON

Classico offers extremely comfortable seating in traditional wrought iron. Galvanized steel strapping make up the seat and the back and decorative rivets connect the beautifully interwoven straps together. Arms made of embossed flat bar complement the galvanized steel frame. Classico is a full-line collection that features dining, deep seating, chaise lounge options, counter stools, and table bases. Additionally, Classico's deep seating features our Plush Comfort cushions.









**951-S**  
**Dining Side Chair**  
 #51-B Back Cushion Optional  
 20.25"W x 25.5"D x 36.5"H  
 Seat Height 18"



**953-AW**  
**Dining Arm Chair**  
 #53-B Back Cushion Optional  
 22.75"W x 25.5"D x 36.5"H  
 Seat Height 18" Arm Height 26"



**953-SRW**  
**Swivel Rocker Dining Arm Chair**  
 #53-B Back Cushion Optional  
 22.75"W x 25.5"D x 36.5"H  
 Seat Height 18" Arm Height 26"



**942-SRW**  
**Swivel Rocker Club Dining Arm Chair**  
 26"W x 29.75"D x 39.5"H  
 Seat Height 19.5" Arm Height 29.25"



**953-SCSW**  
**Swivel Counter Stool**  
 #53-B Back Cushion Optional  
 22.75"W x 25.75"D x 46"H  
 Seat Height 27.5" Arm Height 35.5"



**953-SBSW**  
**Swivel Bar Stool**  
 #53-B Back Cushion Optional  
 22.75"W x 25.75"D x 50"H  
 Seat Height 31.5" Arm Height 39.5"



**956-CCW**  
**Lounge Chair**  
 28"W x 36.75"D x 38.5"H  
 Seat Height 18" Arm Height 26.5"



**956-SBT**  
**Spring Base Lounge Chair**  
 28"W x 33.25"D x 41"H  
 Seat Height 17.5" Arm Height 26.5"



**956-SRW**  
**Swivel Rocker Lounge Chair**  
 28"W x 34.25"D x 40.75"H  
 Seat Height 17.75" Arm Height 26.75"



**937-SBW**  
**High Back Spring Base Lounge Chair**  
 28"W x 34.75"D x 43.75"H  
 Seat Height 17.5" Arm Height 26.5"



**937-SRW**  
**High Back Swivel Rocker Lounge Chair**  
 28"W x 34"D x 44.5"H  
 Seat Height 17.75" Arm Height 26.75"



**956-2SW**  
**Love Seat**  
 52.75"W x 36.75"D x 38.75"H  
 Seat Height 18" Arm Height 26.5"



**956-3SW**  
**Sofa**  
 77.5"W x 36.75"D x 38.75"H  
 Seat Height 18" Arm Height 26.5"



**950-OW**  
**Ottoman**  
 26.75"W x 26.25"D x 18.5"H



**952-CHW**  
**Adjustable Chaise**  
 29.5"W x 68.25"D x 42.25"H  
 Seat Height 18.25" Arm Height 22.75"



**9-ST01**  
**Side Table Base**  
 Fits 24"-30" Round, Square  
 16.25"W x 16.25"D x 19.75"H



**9-OT05**  
**Occasional Table Base**  
 Fits 24"x44", 28"x50"  
 & 36"x58" Rectangle  
 44.5"W x 21.25"D x 17.75"H



**9-DT03**  
**Dining Table Base**  
 Fits 42"-54" Round  
 & 34"-54" Square  
 26.25"W x 26.25"D x 28.25"H



**9-DT07**  
**Dining Table Base**  
 Fits 42"x72", 42"x84"  
 & 44"x84" Rectangle  
 55"W x 27.75"D x 28.25"H

Table base height does not include the height of the top. The height of OW Lee table tops vary. Please see the Table Tops section for additional height information.





# Kensington

## ALUMINUM

The Kensington collection is the perfect balance of modern appeal with neo-classical elements. Inspired by the West London Borough home to Kensington Palace, this collection offers remarkable comfort and exquisite design. Kensington is a full-line collection offering dining, bar, traditional deep seating, chaise lounge, and features our plush comfort cushions and Sytex seating system.







**9134-S**  
**Dining Side Chair**  
 20"W x 27.75"D x 35.75"H  
 Seat Height 20"



**9134-A**  
**Dining Arm Chair**  
 24"W x 28.75"D x 35.75"H  
 Seat Height 20" Arm Height 25"



**9134-SR**  
**Swivel Rocker Dining Arm Chair**  
 24"W x 28.75"D x 35.75"H  
 Seat Height 20" Arm Height 25"



**9134-CS**  
**Armless Counter Stool**  
 20"W x 27.75"D x 44.75"H  
 Seat Height 29"



**9134-BS**  
**Armless Bar Stool**  
 #103-B Back Cushion Optional  
 20"W x 28.75"D x 48.75"H  
 Seat Height 33"



**91165-CC**  
**Lounge Chair**  
 30"W x 36.5"D x 32"H  
 Seat Height 18" Arm Height 24"



**91165-SR**  
**Swivel Rocker Lounge Chair**  
 30"W x 36.5"D x 32"H  
 Seat Height 18" Arm Height 24"



**91165-2S**  
**Love Seat**  
 55.75"W x 36.5"D x 32"H  
 Seat Height 18" Arm Height 24"



**91165-3S**  
**Sofa**  
 81.25"W x 36.5"D x 32"H  
 Seat Height 18" Arm Height 24"



**91170-O**  
**Ottoman**  
 30"W x 21"D x 18"H



**91209-CHW**  
**Adjustable Chaise with Wheels**  
 32"W x 68"D x 39.25"H  
 Seat Height 16" Arm Height 20.25"



**91-ST18SQ**  
**18" Square Side Table**  
 18"W x 18"D x 21"H



**91-OTS285ORT**  
**28" x 50" Occasional Table  
 with Lower Shelf**  
 50"W x 28"D x 18"H



**91-WT1650RT**  
**16" x 50" Console Table**  
 50"W x 16"D x 32"H

For dining, bar and occasional tables refer to the Standard Aluminum Bases in the Tables, Tops and Bases section.



*Plush  
Comfort.*



---

# MARIN

## ALUMINUM

The Marin collection is inspired from the Northern California coastal community of Marin County, located just north of San Francisco's Golden Gate Bridge. Taking cues from both natural elements as well as modern design, Marin exemplifies the relaxed yet sophisticated nature of the area. Marin is a full-line collection that includes sling, padded sling, and cushioned dining, deep seating, and a sling chaise lounge. Marin's cushioned deep seating features our Plush Comfort cushions and Sytex seating systems, which create a superior level of comfort.









**37192-A**  
**Sling Dining Arm Chair**  
 24.25"W x 28"D x 37.5"H  
 Seat Height 18.25" Arm Height 26.5"



**37192-SR**  
**Sling Swivel Rocker Dining Arm Chair**  
 24.25"W x 28"D x 37.5"H  
 Seat Height 18" Arm Height 26.25"



**37192P-A**  
**Padded Sling Dining Arm Chair**  
 24.25"W x 28"D x 37.5"H  
 Seat Height 18.25" Arm Height 26.5"



**37192P-SR**  
**Padded Sling Swivel Dining Arm Chair**  
 24.25"W x 28"D x 37.5"H  
 Seat Height 18" Arm Height 26.5"



**3733-S** New!  
**Dining Side Chair**  
 #143-B Back Cushion Optional  
 20"W x 25.5"D x 34"H  
 Seat Height 19.25"



**3733-A**  
**Dining Arm Chair**  
 #143-B Back Cushion Optional  
 24"W x 27.25"D x 36.25"H  
 Seat Height 18.75" Arm Height 25"



**3733-SR**  
**Swivel Rocker Dining Arm Chair**  
 #143-B Back Cushion Optional  
 24"W x 26.75"D x 36.25"H  
 Seat Height 18.75" Arm Height 25"



**3733-CS** New!  
**Armless Counter Stool**  
 #143-B Back Cushion Optional  
 20"W x 27.25"D x 44.75"H  
 Seat Height 28"



**3733-BS** New!  
**Armless Bar Stool**  
 #143-B Back Cushion Optional  
 20"W x 26.25"D x 47.25"H  
 Seat Height 32"



**37165-CC**  
**Lounge Chair**  
 30"W x 38.75"D x 32"H  
 Seat Height 18" Arm Height 24"



**37165-SR**  
**Swivel Rocker Lounge Chair**  
 30"W x 36.75"D x 32"H  
 Seat Height 18" Arm Height 24"



**37165-2S**  
**Love Seat**  
 56"W x 38.75"D x 32"H  
 Seat Height 18" Arm Height 24"



**37165-3S**  
**Sofa**  
 81.25"W x 38.75"D x 32"H  
 Seat Height 18" Arm Height 24"



**37170-O**  
**Ottoman**  
 30"W x 21"D x 18"H



**37198-CH**  
**Sling Adjustable Chaise**  
 30"W x 78.5"D x 38.75"H  
 Seat Height 15.25" Arm Height 22"



**37-ST01**  
**Side Table Base**  
 Fits 24"-30" Round, Square  
 17.75"W x 17.75"D x 19"H



**37-DT03**  
**Dining Table Base**  
 Fits 42"-54" Round & 34"-54" Square  
 30"W x 30"D x 28.25"H



**37-OT05**  
**Occasional Table Base**  
 Fits 24"x44", 28"x50"  
 & 36"x58" Rectangle  
 43"W x 24"D x 17"H



**37-DT07**  
**Dining Table Base**  
 Fits 42"x72", 42"x84"  
 & 44"x84" Rectangle  
 53.5"W x 33.75"D x 28.25"H

Table base height does not include the height of the top. The height of OW Lee table tops vary. Please see the Table Tops section for additional height information.



*Plush  
Comfort.*



# MONTERRA

## WROUGHT IRON

Monterra is well-known as the most comfortable outdoor chair on the market. The back gently curves to meet the embossed flat bar arms to create a smooth rounded nest. Back and arm cushions curve and embrace you for a comfortable indoor feel. Each piece is detailed with hand hammered rivets for a casual but elegant look and feel. Monterra is a full-line collection and features dining, urban-scale and traditional deep seating, sectional pieces, and chaise lounge. Additionally, Monterra's deep seating features our Plush Comfort cushions.







**404-A**  
**Dining Arm Chair**  
 #04-B Back Cushion Optional  
 29.75"W x 26.75"D x 39.25"H  
 Seat Height 19" Arm Height 25"



**404-SR**  
**Swivel Rocker Dining Arm Chair**  
 #04-B Back Cushion Optional  
 29.75"W x 24.75"D x 40.25"H  
 Seat Height 18.5" Arm Height 24.75"



**404-SCS**  
**Swivel Counter Stool**  
 #04-B Back Cushion Optional  
 30"W x 26.5"D x 48"H  
 Seat Height 27.75" Arm Height 34.75"



**404-SBS**  
**Swivel Bar Stool**  
 #04-B Back Cushion Optional  
 30"W x 26"D x 52.5"H  
 Seat Height 31.5" Arm Height 39"



**424-MSB**  
**Urban-Scale Spring Base Lounge Chair**  
 35.75"W x 30.75"D x 38.25"H  
 Seat Height 19" Arm Height 22.75"



**424-MSR**  
**Urban-Scale Swivel Rocker Lounge Chair**  
 35.75"W x 30.75"D x 38.25"H  
 Seat Height 18.5" Arm Height 22.75"



**423-2MS**  
**Urban-Scale Crescent Love Seat**  
 62.5"W x 31.75"D x 37"H  
 Seat Height 18" Arm Height 22.75"



**4120-O**  
**Urban-Scale Ottoman**  
 33.5"W x 23"D x 18.5"H



**421-CC**  
**Lounge Chair**  
 42.75"W x 38.5"D x 43.75"H  
 Seat Height 20" Arm Height 25.25"



**421-SB**  
**Spring Base Lounge Chair**  
 42.5"W x 38"D x 44"H  
 Seat Height 19.5" Arm Height 25.5"



**421-SR**  
**Swivel Rocker Lounge Chair**  
 42.5"W x 37.75"D x 44.5"H  
 Seat Height 19.5" Arm Height 25"



**426-2S**  
**Crescent Love Seat**  
 70"W x 45"D x 43.5"H  
 Seat Height 19.5" Arm Height 25.5"



**427-2S**  
**Love Seat**  
 67.5"W x 38.5"D x 43.75"H  
 Seat Height 20" Arm Height 25"



**427-3S**  
**Sofa**  
 92"W x 42"D x 43.75"H  
 Seat Height 20" Arm Height 25"



**425-L**  
**Left Sectional**  
 70.5"W x 44.5"D x 44"H  
 Seat Height 20" Arm Height 25"



**425-R**  
**Right Sectional**  
 70.5"W x 44.5"D x 44"H  
 Seat Height 20" Arm Height 25"



**425-C**  
**Center Sectional**  
 68"W x 44.5"D x 43.5"H  
 Seat Height 20"



**419-O**  
**Ottoman**  
 35.75"W x 22.25"D x 18"H



**487-O**  
**Curved Ottoman**  
 62.75"W x 28.5"D x 18.5"H



**428-CH**  
**Adjustable Chaise**  
 42.5"W x 62"D x 45.5"H  
 Seat Height 19" Arm Height 25.5"



*Plush  
Comfort*



---

# STUDIO

## ALUMINUM

The sleek modern lines of the Studio collection are inspired by mid-century and contemporary design. This all-aluminum group makes Studio perfect for coastal locations and it's unique look is a good fit in any modern space. Studio is a full-line collection that includes sling and padded sling dining, deep seating, sectional, and a sling chaise lounge. Studio's cushioned deep seating features our Plush Comfort cushions and Sytex seating systems, which create a superior level of comfort.









**77192-A**  
**Sling Dining Arm Chair**  
 24.25"W x 28.25"D x 37.25"H  
 Seat Height 18.25" Arm Height 26.25"



**77192-SR**  
**Sling Swivel Rocker Dining Arm Chair**  
 24.25"W x 28.25"D x 37.25"H  
 Seat Height 18.25" Arm Height 26.25"



**77192-CS**  
**Sling Counter Stool**  
 24.25"W x 28.25"D x 45.75"H  
 Seat Height 26.5" Arm Height 34.5"



**77192-BS**  
**Sling Bar Stool**  
 24.25"W x 28.25"D x 49.75"H  
 Seat Height 30.5" Arm Height 38.5"



**77192P-A** New!  
**Padded Sling Dining Arm Chair**  
 24.25"W x 28.25"D x 37.25"H  
 Seat Height 18.25" Arm Height 26.25"



**77192P-SR** New!  
**Padded Sling Swivel Rocker Dining Arm Chair**  
 24.25"W x 28.25"D x 37.25"H  
 Seat Height 18.25" Arm Height 26.25"



**77192P-CS** New!  
**Padded Sling Counter Stool**  
 24.25"W x 28.25"D x 45.75"H  
 Seat Height 26.5" Arm Height 34.5"



**77192P-BS** New!  
**Padded Sling Bar Stool**  
 24.25"W x 28.25"D x 49.75"H  
 Seat Height 30.5" Arm Height 38.5"



**77186-CC**  
**Lounge Chair**  
 32.5"W x 33.5"D x 32"H  
 Seat Height 17.5" Arm Height 26.75"



**77186-SR**  
**Swivel Rocker Lounge Chair**  
 32.5"W x 33.5"D x 32"H  
 Seat Height 17.5" Arm Height 26.5"



**77186-2S**  
**Love Seat**  
 58.75"W x 33.5"D x 32"H  
 Seat Height 17.5" Arm Height 26.75"



**77186-3S**  
**Sofa**  
 85"W x 33.5"D x 32"H  
 Seat Height 17.5" Arm Height 26.75"



**77186-L**  
**Left Sectional**  
 29.5"W x 33.5"D x 32"H  
 Seat Height 17.5" Arm Height 26.75"



**77186-R**  
**Right Sectional**  
 29.5"W x 33.5"D x 32"H  
 Seat Height 17.5" Arm Height 26.75"



**77186-C**  
**Center Sectional**  
 26.5"W x 33.25"D x 32"H  
 Seat Height 17.5"



**77186-CR**  
**Corner Sectional**  
 33.25"W x 33.25"D x 32"H  
 Seat Height 17.5"



**77187-B**  
**Bench/Ottoman**  
 58"W x 20"D x 18"H



**77180-O**  
**Ottoman**  
 32"W x 20"D x 17"H



**77198-CH**  
**Sling Chaise**  
 32"W x 83.5"D x 38"H  
 Seat Height 15.25"

For dining, bar and occasional tables refer to the Modern Bases & Tables and the Slatted Aluminum Tables in the Tables, Tops and Bases section.

# CASUAL FIRESIDE

## FIRE PITS

### The HOTTEST Outdoor Trend...

Entertaining outdoors has never been so fun! OW Lee fire pits are the leading brand when it comes to reliable, quality fire pits and tables. Enjoy your OW Lee fire pit with friends and family for years to come!



Hundreds of customizable options



Made in America



Portable as one unit



Natural gas conversion kit included



32k-65k BTU Rating  
(depending on the unit)



ANSI and CSA certified



Easy tank access



OW Lee fire pits are certified according to ANSI and CSA (Canadian) safety standards by Labtest Certification Inc., located in Las Vegas, NV.

Labtest is an accredited independent third party testing certification laboratory which performs various tests to ensure the reliability and safety of every OW Lee fire unit. In addition, every fire pit and fire table is tested in the factory before shipping.



# MATERIAL

OW Lee uses iron and aluminum in the construction of their fire pits and fire table bases. Tops are made of porcelain tile and only the highest quality materials are used.



## SIZE & HEIGHT

OW Lee has sizes from 36" round to 42"x72". Choose from three heights to compliment seating.



**OCCASIONAL  
HEIGHT**  
18.5-19"



**CHAT  
HEIGHT**  
24-25.25"



**COUNTER  
HEIGHT**  
38"

## HEARTH TOPS

OW Lee has a wide variety of hearth top sizes, from 36" round to 42"x72"



**25x45 Top**  
10x30 Burner



**25x65 Top**  
10x50 Burner



**28x72 Top**  
10x50 Burner



**30x50 Top**  
10x30 Burner



**36x58 Top**  
10x30 Burner



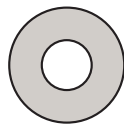
**42x72 Top**  
10x30 Burner



**36 Round Top**  
20 Round Burner



**42 Round Top**  
20 Round Burner



**54 Round Top**  
24 Round Burner

## BTU

BTU stands for "British Thermal Unit" and is a measurement of energy and heat. OW Lee fire pits have an optimal amount of BTUs to provide warmth and conserve fuel.

| Burner Size         | 20-24" RD<br>Chat & Occasional | 10"x30"<br>Chat & Occasional | 10"x30"<br>Counter | 10"x50"<br>Chat & Occasional |
|---------------------|--------------------------------|------------------------------|--------------------|------------------------------|
| Liquid Propane BTUs | 60,000*                        | 60,000                       | 32,000             | 65,000                       |
| Natural Gas BTUs    | 60,000*                        | 62,500                       | 44,000             | 65,000                       |

\*For 36" round fire pits: Liquid Propane BTUs - 48,000; Natural Gas BTUs - 52,000



## OPTIONS

### PORCELAIN TILE

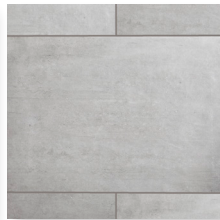
Five porcelain tile top series: *Fresco, City, Reclaimed, Dakota, and Valencia*



Canyon Taupe  
Standard Fresco Tile



Summit Grey  
Standard Fresco Tile



Urban Pulse  
Standard City Series Tile



Urban Shift  
Standard City Series Tile



Cavatina  
Upgrade Fresco Tile



Cabaletta  
Upgrade Fresco Tile



Quarry Naturel  
Upgrade City Series Tile



Brilliant Brown  
Upgrade City Series Tile



Myrtle Beach  
Upgrade Reclaimed Tile



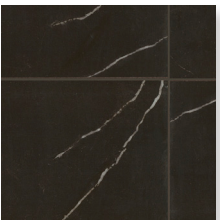
Atlantic City  
Upgrade Reclaimed Tile



Venice Beach  
Upgrade Reclaimed Tile



Palazzo White  
Premium Fresco Tile



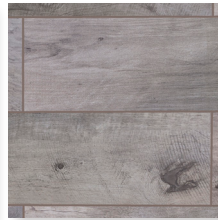
Palazzo Black  
Premium Fresco Tile



Blackwood  
Premium Dakota Tile



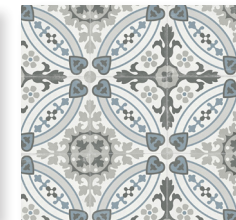
Buckskin  
Premium Dakota Tile



Silver Oak  
Premium Dakota Tile

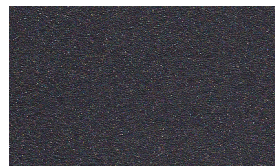


Trullo  
Premium Valencia Tile

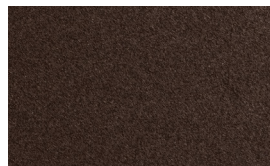


Cielo  
Premium Valencia Tile

## FINISHES



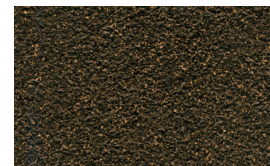
SP21 Graphite



SP50 Copper Creek



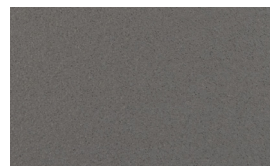
SP11 Rosewood



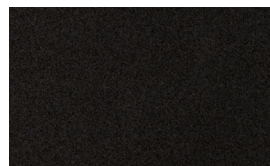
SP42 Espresso



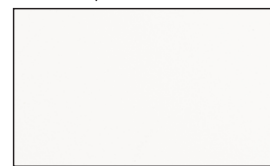
SP22 Sable



TG56 Shadow Grey



TG68 Carbon Black



VT25 Velvet White

# FIRE MEDIA



5388-CCO Coffee  
Crushed Fire Glass Kit



5388-CBL Black  
Crushed Fire Glass Kit



5388-CCR Crystal  
Crushed Fire Glass Kit



5388-MES Espresso  
Mirrored Glass Kit



5388-MSM Smoke  
Mirrored Glass Kit



5388-MCH Champagne  
Mirrored Glass Kit



5388-MSV Silver  
Mirrored Glass Kit



5388-MBL Black  
Mirrored Glass Kit



5388-MPA Pacific  
Mirrored Glass Kit



5388-GAM Amber  
Glass Gem Kit



5388-GAR Aruba Glass  
Gem Kit



5388-CAM Amber  
Crushed Fire Glass Kit



5388-LG5 Lava Granules  
5 lb. Kit



5388-WCL Ceramic Logs  
with Lava Rock Granules Kit

| Burner Pan Measurement | Glass Kits 6 Pound Bags, Lava Granules 5 Pound Bags |           |               |               |
|------------------------|---|-----------|---------------|---------------|
|                        | Mirrored Glass                                      | Gem Glass | Crushed Glass | Lava Granules |
| 20" Round              | 3 Kits  | 3 Kits    | 4 Kits        | 3 Kits        |
| 24" Round              | 5 Kits  | 5 Kits    | 6 Kits        | 3 Kits        |
| 10"x30" Rectangle      | 4 Kits  | 4 Kits    | 4 Kits        | 2 Kits        |
| 10"x50" Rectangle      | 6 Kits  | 7 Kits    | 6 Kits        | 4 Kits        |



## SANTORINI

- Iron Base/Porcelain and Aluminum Top Construction
- Available in Occasional\* and Chat Heights
- Customizable Options:
  - Finish
  - Tile
  - Media
  - Accessories

| SKU        | SIZE                | HEIGHT            | BURNER SIZE      |
|------------|---------------------|-------------------|------------------|
| 5110-36RDC | 36" ROUND           | CHAT HEIGHT       | 20" ROUND BURNER |
| 5110-42RDO | 42" ROUND           | OCCASIONAL HEIGHT | 20" ROUND BURNER |
| 5110-42RDC | 42" ROUND           | CHAT HEIGHT       | 20" ROUND BURNER |
| 5110-54RDO | 54" ROUND           | OCCASIONAL HEIGHT | 24" ROUND BURNER |
| 5110-54RDC | 54" ROUND           | CHAT HEIGHT       | 24" ROUND BURNER |
| 5110-28720 | 28" x 72" RECTANGLE | OCCASIONAL HEIGHT | 10"x50" BURNER   |
| 5110-2872C | 28" x 72" RECTANGLE | CHAT HEIGHT       | 10"x50" BURNER   |
| 5110-30500 | 30" x 50" RECTANGLE | OCCASIONAL HEIGHT | 10"x30" BURNER   |
| 5110-3050C | 30" x 50" RECTANGLE | CHAT HEIGHT       | 10"x30" BURNER   |
| 5110-36580 | 36" x 58" RECTANGLE | OCCASIONAL HEIGHT | 10"x30" BURNER   |
| 5110-3658C | 36" x 58" RECTANGLE | CHAT HEIGHT       | 10"x30" BURNER   |



## CAPRI

- Iron Base/Porcelain and Aluminum Top Construction
- Available in Occasional\* and Chat Heights
- Customizable Options:
  - Finish
  - Tile
  - Media
  - Accessories

| SKU        | SIZE                | HEIGHT            | BURNER SIZE      |
|------------|---------------------|-------------------|------------------|
| 5112-36RDC | 36" ROUND           | CHAT HEIGHT       | 20" ROUND BURNER |
| 5112-42RDO | 42" ROUND           | OCCASIONAL HEIGHT | 20" ROUND BURNER |
| 5112-42RDC | 42" ROUND           | CHAT HEIGHT       | 20" ROUND BURNER |
| 5112-54RDO | 54" ROUND           | OCCASIONAL HEIGHT | 24" ROUND BURNER |
| 5112-54RDC | 54" ROUND           | CHAT HEIGHT       | 24" ROUND BURNER |
| 5112-28720 | 28" x 72" RECTANGLE | OCCASIONAL HEIGHT | 10"x50" BURNER   |
| 5112-2872C | 28" x 72" RECTANGLE | CHAT HEIGHT       | 10"x50" BURNER   |
| 5112-30500 | 30" x 50" RECTANGLE | OCCASIONAL HEIGHT | 10"x30" BURNER   |
| 5112-3050C | 30" x 50" RECTANGLE | CHAT HEIGHT       | 10"x30" BURNER   |
| 5112-36580 | 36" x 58" RECTANGLE | OCCASIONAL HEIGHT | 10"x30" BURNER   |
| 5112-3658C | 36" x 58" RECTANGLE | CHAT HEIGHT       | 10"x30" BURNER   |





## ELBA

- Aluminum Base/Porcelain and Aluminum Top Construction
- Available in Occasional\*, Chat, and Counter Height.
- Customizable Options:
  - Finish
  - Tile
  - Media
  - Accessories

| SKU        | SIZE                | HEIGHT            | BURNER SIZE      |
|------------|---------------------|-------------------|------------------|
| 5122-36RDC | 36" ROUND           | CHAT HEIGHT       | 20" ROUND BURNER |
| 5122-42RDO | 42" ROUND           | OCCASIONAL HEIGHT | 20" ROUND BURNER |
| 5122-42RDC | 42" ROUND           | CHAT HEIGHT       | 20" ROUND BURNER |
| 5122-54RDO | 54" ROUND           | OCCASIONAL HEIGHT | 24" ROUND BURNER |
| 5122-54RDC | 54" ROUND           | CHAT HEIGHT       | 24" ROUND BURNER |
| 5122-2872O | 28" x 72" RECTANGLE | OCCASIONAL HEIGHT | 10"x50" BURNER   |
| 5122-2872C | 28" x 72" RECTANGLE | CHAT HEIGHT       | 10"x50" BURNER   |
| 5122-3050O | 30" x 50" RECTANGLE | OCCASIONAL HEIGHT | 10"x30" BURNER   |
| 5122-3050C | 30" x 50" RECTANGLE | CHAT HEIGHT       | 10"x30" BURNER   |
| 5122-3658O | 36" x 58" RECTANGLE | OCCASIONAL HEIGHT | 10"x30" BURNER   |
| 5122-3658C | 36" x 58" RECTANGLE | CHAT HEIGHT       | 10"x30" BURNER   |
| 5122-4272K | 42" x 72" RECTANGLE | COUNTER HEIGHT    | 10" x30" BURNER  |



## FORMA

- Aluminum Base and Top Construction
- Available in Occasional Height\*
- Customizable Options:
  - Finish
  - Media
  - Accessories

| SKU        | SIZE                | HEIGHT            | BURNER SIZE      |
|------------|---------------------|-------------------|------------------|
| 5152-2545O | 25" x 45" RECTANGLE | OCCASIONAL HEIGHT | 10" x 30" BURNER |
| 5152-2565O | 25" x 65" RECTANGLE | OCCASIONAL HEIGHT | 10" x 50" BURNER |

\*Occasional Height Fire Pits CANNOT be used with traditional propane tanks. See Page 38 for specialty propane tanks.



## FLAT COVERS

|           |                                |
|-----------|--------------------------------|
| 5484-1030 | 10" x 30" METAL FIRE PIT COVER |
| 5484-1050 | 10" x 50" METAL FIRE PIT COVER |
| 5484-20RD | 20" RD METAL FIRE PIT COVER    |
| 5484-24RD | 24" RD METAL FIRE PIT COVER    |



## GLASS GUARDS

|           |                                |
|-----------|--------------------------------|
| 5482-1030 | 10" x 30" GLASS FIRE PIT GUARD |
| 5482-1050 | 10" x 50" GLASS FIRE PIT GUARD |
| 5482-20RD | 20" RD GLASS FIRE PIT GUARD    |
| 5482-24RD | 24" RD GLASS FIRE PIT GUARD    |



## SPECIALTY FUEL

|         |                                |
|---------|--------------------------------|
| COM0598 | 20 Lb. Horizontal Propane Tank |
| COM0599 | 11 Lb. Propane Tank            |

\*For Occasional Height Fire Pits

*Size of glass guards and flat covers reference the size of the burner for each fire pit.*





# TABLES, TOPS AND BASES

Our porcelain table tops are made with commercial grade porcelain tiles. Porcelain tiles are used instead of ceramic tiles or natural stone because they are denser and less porous which means they do not absorb water. In freezing temperatures these other materials are likely to split or crack when the water absorbed into the material freezes and expands. Our porcelain tiles not only repel water, but all other liquids as well, so it will not stain from spills. You can learn more about what goes into our porcelain table tops on page 5.



## TOP + BASE

Mix and match any of our base styles with our Porcelain tops. Reference the chart to see which tops fit on which style bases.

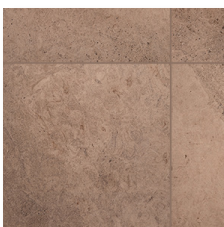
|           |                       |
|-----------|-----------------------|
| 24" Rd.   | Fits -01 Style Bases  |
| 24" Sq.   | Fits -01 Style Bases  |
| 30" Rd.   | Fits -01 Style Bases  |
| 42" Rd.   | Fits -03 Style Bases  |
| 42" Sq.   | Fits -03 Style Bases  |
| 54" Rd.   | Fits -03 Style Bases  |
| 28" x 50" | Fits -05 Style Bases  |
| 36" x 58" | Fits -05 Style Bases  |
| 42" x 84" | Fits -07 Style Bases  |
| 42"x120"  | Fits - 10 Style Bases |



## FRESCO PORCELAIN TOPS



|             |                              |                       |
|-------------|------------------------------|-----------------------|
| #P-24D      | 24" Rd.                      | Fits -01 Style Bases  |
| #P-24SQD    | 24" Sq.                      | Fits -01 Style Bases  |
| #P-2850RTD  | 28" x 50"                    | Fits -05 Style Bases  |
| #P-30D      | 30" Rd.                      | Fits -01 Style Bases  |
| #P-3658RTD  | 36" x 58"                    | Fits -05 Style Bases  |
| #P-3658RTUD | 36" x 58" with umbrella hole | Fits -05 Style Bases  |
| #P-42D      | 42" Rd.                      | Fits -03 Style Bases  |
| #P-42UD     | 42" Rd. with umbrella hole   | Fits -03 Style Bases  |
| #P-42SQD    | 42" Sq.                      | Fits -03 Style Bases  |
| #P-42SQUD   | 42" Sq. with umbrella hole   | Fits -03 Style Bases  |
| #P-54D      | 54" Rd.                      | Fits -03 Style Bases  |
| #P-54UD     | 54" Rd. with umbrella hole   | Fits -03 Style Bases  |
| #P-4284RTD  | 42" x 84"                    | Fits -07 Style Bases  |
| #P-4284RTUD | 42" x 84" with umbrella hole | Fits -07 Style Bases  |
| #P-42120RTD | 42"x120"                     | Fits - 10 Style Bases |



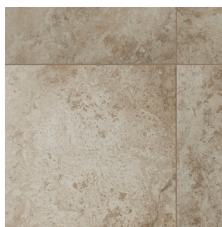
Canyon Taupe  
Standard Grade



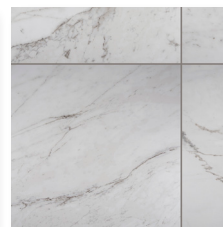
Summit Grey  
Standard Grade



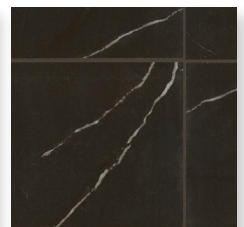
Cabaletta  
Upgrade Grade



Cavatina  
Upgrade Grade



Palazzo White  
Premium Grade

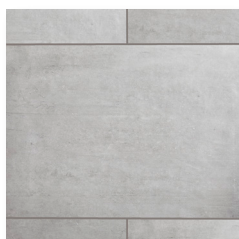


Palazzo Black  
Premium Grade

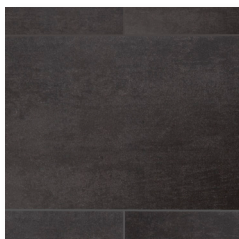
## CITY SERIES PORCELAIN TOPS



|             |                              |                       |
|-------------|------------------------------|-----------------------|
| #E-24D      | 24" Rd.                      | Fits -01 Style Bases  |
| #E-24SQD    | 24" Sq.                      | Fits -01 Style Bases  |
| #E-2850RTD  | 28" x 50"                    | Fits -05 Style Bases  |
| #E-30D      | 30" Rd.                      | Fits -01 Style Bases  |
| #E-3658RTD  | 36" x 58"                    | Fits -05 Style Bases  |
| #E-3658RTUD | 36" x 58" with umbrella hole | Fits -05 Style Bases  |
| #E-42D      | 42" Rd.                      | Fits -03 Style Bases  |
| #E-42UD     | 42" Rd. with umbrella hole   | Fits -03 Style Bases  |
| #E-42SQD    | 42" Sq.                      | Fits -03 Style Bases  |
| #E-42SQUD   | 42" Sq. with umbrella hole   | Fits -03 Style Bases  |
| #E-54D      | 54" Rd.                      | Fits -03 Style Bases  |
| #E-54UD     | 54" Rd. with umbrella hole   | Fits -03 Style Bases  |
| #E-4284RTD  | 42" x 84"                    | Fits -07 Style Bases  |
| #E-4284RTUD | 42" x 84" with umbrella hole | Fits -07 Style Bases  |
| #E-42120RTD | 42"x120"                     | Fits - 10 Style Bases |



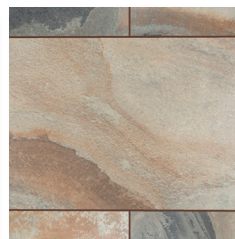
Urban Pulse  
Standard Grade



Urban Shift  
Standard Grade



Brilliant Brown\*  
Upgrade Grade



Quarry Naturel  
Upgrade Grade

\*Brilliant Brown tiles are made to resemble a natural material. The tiles are varied so that no two tables will look exactly alike.



## RECLAIMED PORCELAIN TOPS



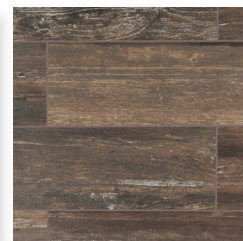
|             |                              |                       |
|-------------|------------------------------|-----------------------|
| #W-24D      | 24" Rd.                      | Fits -01 Style Bases  |
| #W-24SQD    | 24" Sq.                      | Fits -01 Style Bases  |
| #W-2850RTD  | 28"x50"                      | Fits -05 Style Bases  |
| #W-30D      | 30" Rd.                      | Fits -01 Style Bases  |
| #W-3658RTD  | 36" x 58"                    | Fits -05 Style Bases  |
| #W-3658RTUD | 36" x 58" with umbrella hole | Fits -05 Style Bases  |
| #W-42D      | 42" Rd.                      | Fits -03 Style Bases  |
| #W-42UD     | 42" Rd. with umbrella hole   | Fits -03 Style Bases  |
| #W-42SQD    | 42" Sq.                      | Fits -03 Style Bases  |
| #W-42SQUD   | 42" Sq. with umbrella hole   | Fits -03 Style Bases  |
| #W-54D      | 54" Rd.                      | Fits -03 Style Bases  |
| #W-54UD     | 54" Rd. with umbrella hole   | Fits -03 Style Bases  |
| #W-4284RTD  | 42" x 84"                    | Fits -07 Style Bases  |
| #W-4284RTUD | 42" x 84" with umbrella hole | Fits -07 Style Bases  |
| #W-42120RTD | 42"x120"                     | Fits - 10 Style Bases |



Myrtle Beach  
Upgrade Grade



Atlantic City  
Upgrade Grade



Venice Beach  
Upgrade Grade

# DAKOTA PORCELAIN TOPS



|             |                              |                       |
|-------------|------------------------------|-----------------------|
| #D-24D      | 24" Rd.                      | Fits -01 Style Bases  |
| #D-24SQD    | 24" Sq.                      | Fits -01 Style Bases  |
| #D-2850RTD  | 28" x 50"                    | Fits -05 Style Bases  |
| #D-30D      | 30" Rd.                      | Fits -01 Style Bases  |
| #D-3658RTD  | 36" x 58"                    | Fits -05 Style Bases  |
| #D-3658RTUD | 36" x 58" with umbrella hole | Fits -05 Style Bases  |
| #D-42D      | 42" Rd.                      | Fits -03 Style Bases  |
| #D-42UD     | 42" Rd. with umbrella hole   | Fits -03 Style Bases  |
| #D-42SQD    | 42" Sq.                      | Fits -03 Style Bases  |
| #D-42SQUD   | 42" Sq. with umbrella hole   | Fits -03 Style Bases  |
| #D-54D      | 54" Rd.                      | Fits -03 Style Bases  |
| #D-54UD     | 54" Rd. with umbrella hole   | Fits -03 Style Bases  |
| #D-4284RTD  | 42" x 84"                    | Fits -07 Style Bases  |
| #D-4284RTUD | 42" x 84" with umbrella hole | Fits -07 Style Bases  |
| #D-42120RTD | 42"x120"                     | Fits - 10 Style Bases |



Buckskin  
Premium Grade

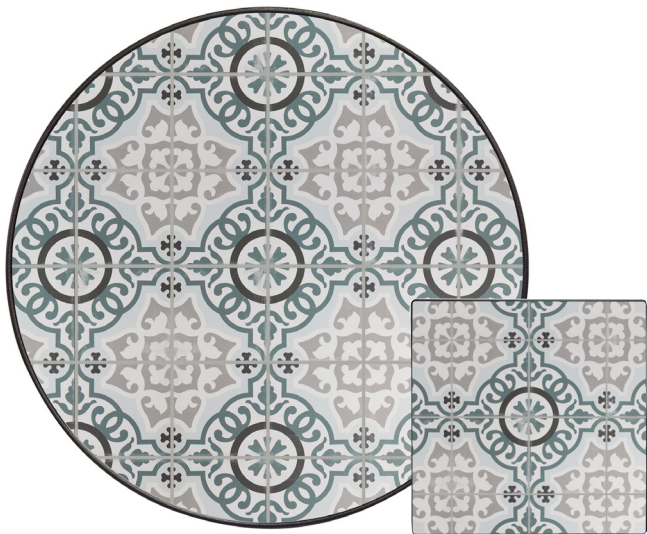


Silver Oak  
Premium Grade



Blackwood  
Premium Grade

# VALENCIA PORCELAIN TOPS



|             |                              |                       |
|-------------|------------------------------|-----------------------|
| #V-24D      | 24" Rd.                      | Fits -01 Style Bases  |
| #V-24SQD    | 24" Sq.                      | Fits -01 Style Bases  |
| #V-2850RTD  | 28" x 50"                    | Fits -05 Style Bases  |
| #V-30D      | 30" Rd.                      | Fits -01 Style Bases  |
| #V-3658RTD  | 36" x 58"                    | Fits -05 Style Bases  |
| #V-3658RTUD | 36" x 58" with umbrella hole | Fits -05 Style Bases  |
| #V-42D      | 42" Rd.                      | Fits -03 Style Bases  |
| #V-42UD     | 42" Rd. with umbrella hole   | Fits -03 Style Bases  |
| #V-42SQD    | 42" Sq.                      | Fits -03 Style Bases  |
| #V-42SQUD   | 42" Sq. with umbrella hole   | Fits -03 Style Bases  |
| #V-54D      | 54" Rd.                      | Fits -03 Style Bases  |
| #V-54UD     | 54" Rd. with umbrella hole   | Fits -03 Style Bases  |
| #V-4284RTD  | 42" x 84"                    | Fits -07 Style Bases  |
| #V-4284RTUD | 42" x 84" with umbrella hole | Fits -07 Style Bases  |
| #V-42120RTD | 42"x120"                     | Fits - 10 Style Bases |



Trullo  
Premium Grade



Cielo  
Premium Grade



## TABLE BASES

### STANDARD IRON (Complements Monterra)



**ST01-BASE**

**Side Table Base**

Fits 24"-30" Round, Square  
15"W x 15"D x 19"H



**OT03-BASE**

**Occasional Table Base**

Fits 42"-54" Round & 34"-54" Square  
25"W x 25"D x 17"



**OT05-BASE**

**Occasional Table Base**

Fits 28"x50" & 36"x58" Rectangle  
43"W x 20"D x 17"H



**DT01-BASE**

**Dining Table Base**

Fits 24"-30" Round, Square  
15"W x 15"D x 28"H



**DT03-BASE**

**Dining Table Base**

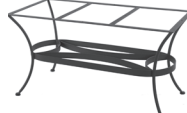
Fits 42"-54" Round & 34"-54" Square  
25"W x 25"D x 28"H



**DT05-BASE**

**Dining Table Base**

Fits 28"x50" & 36"x58" Rectangle  
43"W x 20"D x 28"H



**DT07-BASE**

**Dining Table Base**

Fits 42"x84" Rectangle  
53.5"W x 26.5"D x 28"H



**CT01-BASE**

**Counter Table Base**

Fits 24"-30" Round, Square  
15"W x 15"D x 37"H



**CT03-BASE**

**Counter Table Base**

Fits 42"-54" Round & 34"-54" Square  
25"W x 25"D x 37"H



**BT01-BASE**

**Bar Table Base**

Fits 24"-30" Round, Square  
15"W x 15"D x 41"H



**BT03-BASE**

**Bar Table Base**

Fits 42"-54" Round & 34"-54" Square  
25"W x 25"D x 41"H

### CLASSICO IRON (Complements Classico)



**9-ST01**

**Side Table Base**

Fits 24"-30" Round, Square  
16.25"W x 16.25"D x 19.75"H



**9-OT05**

**Occasional Table Base**

Fits 28"x50" & 36"x58" Rectangle  
44.5"W x 21.25"D x 17.75"H



**9-DT03**

**Dining Table Base**

Fits 42"-54" Round & 34"-54" Square  
26.25"W x 26.25"D x 28.25"H



**9-DT07**

**Dining Table Base**

Fits 42"x84" & Rectangle  
55"W x 27.75"D x 28.25"H

### STANDARD ALUMINUM (Compliments Kensington)



**AT-DT03**

**Dining Table Base**

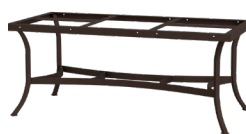
Fits 42"-54" Round & 34"-54" Square or Boat Shaped Tops  
25"W x 25"D x 28"H



**AT-DT07**

**Dining Table Base**

Fits 42"x72", 42"x84" & 44"x84" Rectangle or Boat Shaped Tops  
53.5"W x 26.5"D x 28"H



**AT-DT10**

**Dining Table Base**

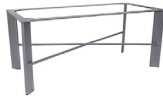
Fits 42"x120" Rectangle Tops  
67"W x 32"D x 28"H

## TABLE BASES

### MODERN ALUMINUM (Complements Aris, Avana, and Studio)



**MA-ST01**  
**Side Table Base**  
Fits 24"-30" Round, Square  
15"W x 15"D x 20"H



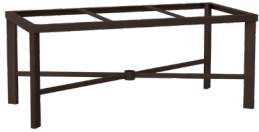
**MA-OT05**  
**Occasional Table Base**  
Fits 28"x50" & 36"x58" Rectangle  
43"W x 20"D x 18"H



**MA-DT03**  
**Dining Table Base**  
Fits 42"-54" Round & 34"-54" Square  
25"W x 25"D x 28"H



**MA-DT07**  
**Dining Table Base**  
Fits 42"x84" Rectangle  
53.5"W x 26.5"D x 28"H



**MA-DT10** **New!**  
**Dining Table Base**  
Fits 42"x120" Rectangle Tops  
67"W x 32"D x 28"H



**MA-CT03**  
**Counter Table Base**  
Fits 42"-54" Round & 34"-54" Square  
25"W x 25"D x 37"H



**MA-CT05**  
**Counter Table Base**  
Fits, 28"x50" & 36"x58" Rectangle  
43"W x 20"D x 37.5"H



**MA-BT03**  
**Bar Table Base**  
Fits 42"-54" Round & 34"-54" Square  
25"W x 25"D x 41"H



**MA-BT05**  
**Bar Table Base**  
Fits 28"x50" & 36"x58" Rectangle  
20"W x 43"D x 41.5"H

### MARIN (Complements Marin)



**37-ST01**  
**Side Table Base**  
Fits 24"-30" Round, Square  
17.75"W x 17.75"D x 19"H



**37-DT03**  
**Dining Table Base**  
Fits 42"-54" Round & 34"-54" Square  
30"W x 30"D x 28.25"H



**37-OT05**  
**Occasional Table Base**  
Fits 28"x50" & 36"x58" Rectangle  
43"W x 24"D x 17"H



**37-DT07**  
**Dining Table Base**  
Fits 42"x84" Rectangle  
53.5"W x 33.75"D x 28.25"H





## TABLES

STANDARD IRON ACCENT TABLES (See page 34 for tile options)



**51-LT20RD**

**20" Rd. Porcelain Tile Side Table**

20"W x 20"D x 24"H



**91-ST18SQ**

**18" Square Side Table**

18"W x 18"D x 21"H



**91-OTS2850RT**

**Occasional Table  
w/ Lower Shelf**

50"W x 28"D x 18"H



**91-WT1650RT**

**Console Table**

50"W x 16"D x 32"H

QUADRA (See page 34 for tile options)



**QD-2323ST**

**23" Sq. Side Table**

22.5"W x 22.5"D x 18"H



**QD-3153OT**

**31"x53" Occasional Table**

52.5"W x 30.5"D x 18"H



**QD-2157DT**

**21"x57" Console/Dining Table**

56.5"W x 20.5"D x 29"H

ADA COMPLIANT PRODUCT



**QD-3375DT**

**33"x75" Dining Table**

75"W x 33"D x 29"H

ADA COMPLIANT PRODUCT



**QD-3375DTU**

**33"x75" Dining Table**

With 1.625" Umbrella Hole

75"W x 33"D x 29"H

ADA COMPLIANT PRODUCT



**QD-2157CT**

**21"x57" Counter Table**

56.5"W x 20.5"D x 37.5"H



**QD-3375CT**

**33"x75" Counter Table**

75"W x 33"D x 37.5"H



**QD-3375CTU**

**33"x75" Counter Table**

With 1.625" Umbrella Hole

75"W x 33"D x 37.5"H

# THE FINISHING TOUCHES

OW Lee offers 140 stock fabric options in three distinct collections, expertly curated and organized by coordinating colors and patterns to help you create your own unique look. All of our fabrics are solution-dyed acrylic, the industry gold standard for UV resistance and durability. COM available in A Grade. Cording options are available to embellish your look. Sunbrella Sling seating is also available for cushionless looks.



## THROW PILLOWS

### BASIC

|          |            |
|----------|------------|
| #TP-1515 | 15" Square |
| #TP-1519 | 15" x 19"  |
| #TP-1119 | 11" x 19"  |
| #TP-1919 | 19" Square |

### BOXED

|           |           |
|-----------|-----------|
| #BP-1519W | 15" x 19" |
|-----------|-----------|

OW Lee Throw Pillows are available with or without trim and accent back fabric. Choose main fabric, accent fabric, and welt or cording for a refined look.

## WORLD OF COLOR FABRICS





# DESTINATIONS FABRICS



# PENDLETON FABRICS



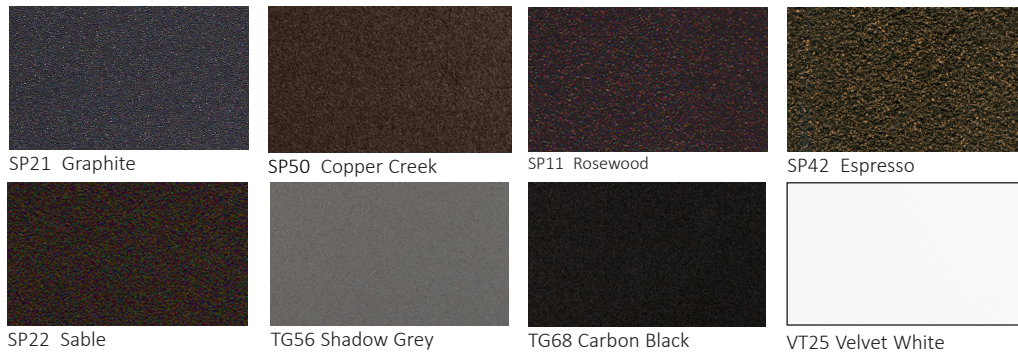
## CORDING



## SUNBRELLA SLING



## FINISHES





## CARE & MAINTENANCE

### **Metal Frame Maintenance**

OW Lee metal furniture and fire pits are designed to require minimum maintenance. Metal frames/bases should be kept clean. Do not let dirt build up. Cleaning with mild soap and water, and seasonal touch-up of any scratches, chips or occasional rust seepage from crevices or hidden, unfinishable surfaces inherent in some ornate designs is required. Touch-up pens in matching frame colors are available through your retail dealer. Never leave furniture or fire pit standing in water. To keep your furniture or fire pit looking its best, you may wish to store or cover it when not in use for an extended period of time. More frequent care & maintenance may be required in coastal areas.

### **Cushion, Sling, and Padded Sling Care**

OW Lee offers quality 100% solution dyed acrylics and only the finest outdoor foam and fiber fillings. Fabrics have been treated to resist stains and water before leaving the factory. Regular cleaning with mild soap and water using a sponge or soft scrub brush is all that is required.

### **Porcelain Table Tops & Hearth Tops**

Regular cleaning, using a damp rag with plain water to remove minor dirt and dust is all that is required. All-purpose household cleaners can be used on porcelain tile. Soapless detergents such as Spic and Span® or 409® can also be used. Rinse with clean water and wipe dry to prevent water spots. Cleaning products

available from your local grocery or hardware store can be used to remove soap scum, hard water deposits, and mildew stains from the tile. Be sure to consult the cleaning product's instructions to ensure the product is recommended for your type of tile. After cleaning, rinse well and wipe dry. For detailed information on the care and maintenance of your OW Lee Porcelain tops and hearth tops, please visit [www.owlee.com](http://www.owlee.com).

For more detailed care and maintenance information please visit [www.owlee.com](http://www.owlee.com).

SCAN FOR MORE INFORMATION  
ON CARE & MAINTENANCE



# LIMITED RETAIL WARRANTY



**Frame** OW Lee offers a twenty (20) year limited structural warranty on frames under normal use. OW Lee will, at factory option, repair or replace any OW Lee frame that has failed structurally during the warranty period from the date of purchase. To retain the warranty, regular care and maintenance is required.

**Finish** OW Lee offers a five (5) year limited warranty for frames against blistering, peeling, or fading of the frame finish under normal use. OW Lee will, at factory option, refinish or replace your OW Lee frame if the above occurs during the warranty period from the date of purchase. Occasional rust seepage from crevices and hidden unfinished surfaces inherent in some ornate wrought iron designs is considered a care and maintenance function and is not considered a finish failure. To retain the warranty, regular care and maintenance is required. More frequent and extra care and maintenance is required for any sort of metal furniture that is placed in coastal areas or on the shoreline close to the salt water air. Remove salt buildup by rinsing furniture weekly and drying it with a soft cloth. Harsh cleaners should be avoided, however a gentle mild soap with water can be applied if needed. VARIATIONS IN FINISH COLOR, TEXTURE AND GLOSS WILL OCCUR FROM LOT TO LOT. WHILE WE HAVE TOLERANCES ESTABLISHED WITH OUR VENDORS, OW LEE CANNOT GUARANTEE AN EXACT MATCH ON PIECES THAT ARE POWDER COATED IN DIFFERENT LOTS AND IS NOT COVERED UNDER WARRANTY.

**\*Important Notice: Velvet White finish is excluded from finish warranty on wrought iron and steel frames.**

**Cushions** OW Lee offers a five (5) year limited warranty on the craftsmanship and construction of the cushion, sling and padded sling seat, and Sytex material under normal use. This warranty includes any fading or discoloration of the fabric. Fabrics are constructed of various types of yarns and various numbers of yarns in the warp and fill. Such variations in construction result in variations in sag and sag recovery. SUCH VARIATIONS IN SAG AND SAG RECOVERY ARE SPECIFICALLY EXCLUDED FROM THIS WARRANTY. C.O.M. fabrics are not covered under this warranty. OW Lee will, at factory option, repair or replace your OW Lee cushions if determined defective as listed above within the warranty period from the date of purchase. To retain the warranty, regular care and maintenance is required. Never use a power washer or submerge in water to clean.

**Porcelain Tops** OW Lee offers a five (5) year limited warranty on workmanship and structural integrity of porcelain tops under normal use. Samples displayed or provided to customers are a representation of that series color and are not expressed or implied to be identical. Porcelain tiles are manufactured to mimic natural stone. Some unevenness in the table top surface is considered normal. OW Lee will, at factory option, repair or replace any top found to be defective during the warranty period from the date of purchase. To retain the warranty, regular care and maintenance is required.

**Fire Pit Component Parts** OW Lee offers a two (2) year limited warranty on fire pit burner components under normal use. OW Lee will, at factory option, repair or replace any outdoor fire pit burner found to be defective during this warranty period from the date of purchase. To retain the warranty, regular care and maintenance is required.

**Other Component Parts** OW Lee offers a two (2) year limited warranty on purchased component parts such as glides, bolts, wheels, and swivel bases, etc. that fail due to a manufacturers defect under normal use. To retain the warranty, regular care and maintenance is required.

This limited warranty does not apply to any damage caused by shipping, accidents, staining, natural weathering, misuse, alterations or repairs. No other person is authorized to assume liability on behalf of OW Lee, and in no event shall OW Lee be liable for any contributory or subsequent damage related to the merchandise purchased from OW Lee.

## Items Not Covered Under Warranty (Residential)

- Any failure caused by unreasonable use or abuse.
- Rust seepage or bleeding from crevices or hidden, non-finished surfaces inherent in some ornate wrought iron designs.
- Rusting and/or oxidation of frames resulting from exposed metals that have been scratched, chipped or not maintained as outlined in the care and maintenance instructions.
- Natural fading or discoloration of fabrics beyond warranty period.
- C.O.M. fabrics (customer's own material).
- Normal fading of frame finish.
- Accidental damage (including fire, wind or other acts of God).
- Permanent stains caused by lotions, oils or other substances.
- Hard-water deposits or calcium build-up due to minerals found in regional water supplies.
- Table/hearth tops or bases installed and/or used with other manufacturer's table bases, table, or hearth top, or incorrect installation of the base to the table top and fire media.
- Furniture used for commercial or institutional use. (See Commercial Warranty at [owlee.com](http://owlee.com).)
- Items that are repaired, refinished or otherwise modified by any person or entity other than OW Lee.

## Freight Storage Fees

Any orders, commercial, residential, or retail stored at our factory due to customer delay is subject to a freight storage fee at our discretion.

**Please Note: REGULAR CARE & MAINTENANCE IS EXPLICITLY REQUIRED TO RETAIN YOUR WARRANTY.** Please visit [www.owlee.com/customer-care/](http://www.owlee.com/customer-care/) for care & maintenance instructions. OW Lee reserves the right to modify specifications as may be necessary. Please contact the factory to confirm specifications. ½" tolerances are considered within spec.

Return of Furniture PRIOR AUTHORIZATION from the factory or factory representative is required. You must be the original purchaser and be able to provide proof of purchase when you make a claim. To submit a warranty claim, contact the dealer where you purchased your furniture. If you are not sure how to contact the dealer, contact our warranty department at (800)-776-9533, via fax: (909) 947-6614 and/or via email at [owleera@gmail.com](mailto:owleera@gmail.com). If the complaint is covered by warranty and the furniture returned within 24 months from the date of purchase, OW Lee will arrange for freight pick-up and pay the surface freight from the dealer location to the factory. The consumer is responsible for freight charges to and from the factory if beyond the time frame stated above. Return furniture must be boxed for freight pick up. Furniture must have been used only for residential use as defined in the original purchase order. Except as expressly provided herein, OW Lee makes no warranties, whether express or implied including, but not limited to, warranties of merchantability and fitness for a particular purpose. OW Lee's limited warranty claims may only be processed directly through OW Lee by the dealer who made the sale of the merchandise. In the event the furniture style, frame finish, fabric, or table top has been discontinued, OW Lee will replace the product with a similar item currently offered by OW Lee.

MANUFACTURED IN THE U.S.A.

MADE FOR GENERATIONS



1206 Fifth Street, Comfort, Texas | [www.owlee.com](http://www.owlee.com) | (800)776-9533 | [sales@owlee.com](mailto:sales@owlee.com)